

JVC

Everio R 2018



<http://www.jvc.net/everio-r/>

Everio R

Everlasting Adventures



QUAD PROOF + LONG LIFE



The adventure continues...

Everio R's adventure continues, so you can go further and discover more with 4K image quality and Quad Proof reliability. Capture every miraculous moment, and share them the moment you come home.



Quad Proof + Long Life



Took a dive?
No problem. It's washable!



5m/16.4ft Waterproof

Whether you drop it into water or dive with it, IPX6/IPX8 certified waterproofing keeps Everio R running.



Dustproof

IP5X certified dustproofing lets you use Everio R in some seriously dusty environments without worry.



1.5m/4.9ft Shockproof

Accidental droppage can destroy an ordinary camcorder, but Everio R is built tough to take it in stride.



-10°C/14°F Freezeproof

Take Everio R out in the snow or on the slopes – even if you're freezing, Everio R will keep working.



Internal Long-Life Battery

Shoot entire events, with no risk of damage by changing the battery in bad weather.

Note: Quad Proof is not a guarantee of protection against damage and malfunction.

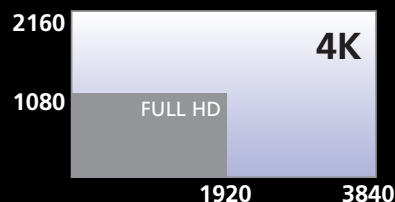
The First Quad-Proof 4K Cam*

4K EverioR

GZ-RY980 is the first shooting style camcorder to put 4K video and Quad Proof reliability in the palm of your hand. Enjoy powerful imaging capabilities in the form factor known for superior shooting stability.

*For shooting style camcorders

Detailed, realistic pictures full of presence



4K



FULL HD



GZ-RY980



*in 4K mode, 5.5H in HD 60i mode



Technologies to maximize the potential of 4K

Newly-developed JVC 4K GT LENS

Provides a wide angle of 29.9mm, custom-designed for fine image reproduction while maintaining a compact profile.

10x Optical Zoom 18x Dynamic Zoom (HD)

New image processing engine – FALCONBRID 4K

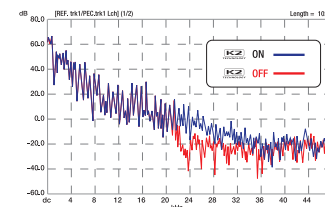
Enables high-speed processing of the massive 4K pixel data for high quality video recording, while also contributing to low power consumption.



1/2.3" 18.9 Megapixel Back-illuminated CMOS Sensor

K2 Technology

Restores sound elements that are lost during digital compression, assuring realistic sound of recorded scenes.



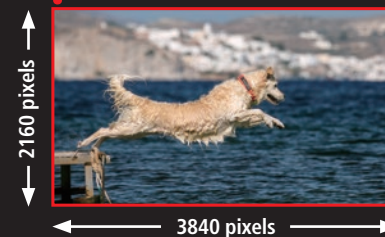
Make the most of 4K quality for creative recording



4K EverioR

8 Megapixel Stills captured from 4K Video

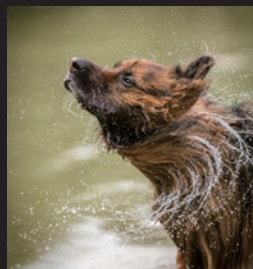
Still images can be freely captured from 4K video, with more than 8 megapixel quality. Grab that crucial moment in a way that still cameras just can't. No need to switch recording modes; no need to carry a separate digital still camera. Just record video and choose the best shots afterward.



Get the best still shot!

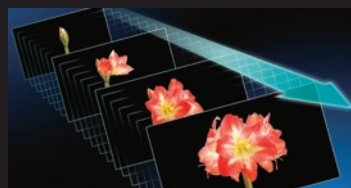
Full HD High-Speed Recording for Slow Motion Playback

With high-speed recording, you can enjoy impressive slow motion of sports, outdoor and near-water scenes, in HD quality. Try recording situations that only a Quad Proof camera can capture, and savor every second of it.



4K Time-Lapse Recording

You can enjoy time-lapse video in 4K quality. Just set the camera and shoot, and that's all. No editing required afterward. Take unique, creative videos that are sure to turn heads.



Full-Fledged Sound with External Mic Input

Super realistic 4K video deserves high-quality realistic sound to go along with it. You can connect an external microphone to record documentary style soundtracks.



Mounting example with an optional third party microphone and a bar mount.

Usability and expandability

Wide Viewing Angle LCD

New 460K-pixel wide viewing LCD with improved visibility outdoors with a built-in polarizing plate.



Conventional



New LCD



USB Type-C
[for AC adapter/Portable Battery (Power Bank)]

USB Standard A
[for Wi-Fi adapter]

Dual SD Card Slots

A single 64GB card* can record about 1hr. 45min. of 4K video. Unique features using two cards include;

Series Recording to record continuously and seamlessly over two cards and Dual Recording to record the same content (HD only) on both cards.

*Card is not provided.

Wi-Fi Functions (with optional adapter)

• **Remote Operation**
Remote monitoring and camera operation using smartphone/tablet/PC.



• **Live Streaming**
Recording and streaming (HD video/audio) are simultaneously possible via Internet.



HD Models

More to Choose from for Quality, Durability and Compactness

Full HD 1920x1080 Recording

Enjoy high quality video in Full HD resolution with HD Everio R. 1080/60p progressive recording is also available for high-end models.



40x Optical and 60x Dynamic Zoom

Zoom to 40x magnification with full optical quality, then beyond to 60x without sacrificing resolution.



Zoom Position Memory and Zoom Microphone

You can instantly return to a pre-set zoom position while the zoom microphone varies the focal point to match the picture.

Internal Memory

In addition to an SD card slot, HD models have an internal memory (32GB or 4GB). Data copy/transfer from internal memory to card is possible.



Enhanced Image Stabilization

Count on steady, less jittery images with effective compensation for camera shake.



Without Stabilization



With Stabilization

Auto Illumi. Light

GZ-R560

Built-in LED light automatically turns on while in dark environments.



Photo-Insert Recording

Record video with the previously-shot still image overlaid in a sub-window. Use it like recording a sightseeing spot with its signboard at the same time.



Self Check REC/PLAY

Automatically repeats recording and playback at set intervals. Good for checking your own form, such as a swing or a step.

GZ-R560



GZ-R460



QUAD PROOF + LONG LIFE





Common Features to Enhance Your Outdoor Activities [4K & HD Models]

Y-Shaped Grip Belt

Y-shaped grip belt ensures more comfortable and stable holding. Its dry-easy material and water-resistant processing make it ideal for use in water.



Seesaw Zoom Lever

This professional-type zoom lever provides intuitive "Tele and Wide" operation with a forward/backward movement.



Glove-Sensitive Touch Panel

You can operate even while wearing gloves thanks to the pressure-sensitive touch panel. HD models even offer large menu buttons for easier touch operation.



Conversion Lens Attachable

The filter thread enables you to attach various third-party filters and conversion lenses to boost your creativity. (46mm for 4K model, 37mm for HD model)



Compatible with Portable Battery and USB Charging*

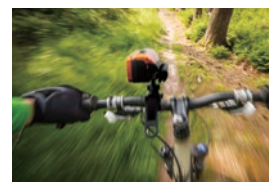
Just connect a commercially-available portable battery (power bank) for additional power. You can quick charge via USB terminal to extend operation time.

*See next page "Feature Comparison" for more information on compatibility.



Recording with LCD Monitor Closed

Recording continues even when the monitor is closed so you can use the camera in more active situations.



Auto Wind Cut

Original technology reduces wind noises picked up at the microphone, so gusts of wind won't spoil your soundtrack.

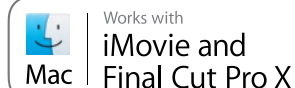


PC Software Supplied

Windows PC software supplied (via download or in the camera's memory) for easy import, management and editing of your videos. Also makes sharing your footage on social media a snap.

Works with iMovie and Final Cut Pro X

You can edit your video afterwards with iMovie or Final Cut Pro X just like the pros do.



OPTIONAL ACCESSORIES



Roll Bar Mount
MT-RB002

Attach your Everio R (HD models only) to handlebars, roll bars, and more. Compatible with pipes of 21mm – 40mm (7/8" – 1-5/8") in diameter.



Float Strap
WA-FL002




To help your Everio R float in water. Bright orange color makes it easy to retrieve the camera.



Suction Cup Mount
MT-SC002

Attach your Everio R (HD models only) to cars, boats, motorcycles and more. Enjoy onboard-camera footage.

Feature Comparison

		4K Model	HD Models	
		GZ-RY980 	GZ-R560 	GZ-R460 
Quad Proof Design		Yes	Yes	Yes
Internal Long-Life Battery ^{*1}		4.5H (4K) / 5.5H (HD 60i)	5H	5H
Storage Media	Internal Memory	—	32GB	4GB
	Memory Card	SDHC/SDXC ^{*2} , Dual slots	SD/SDHC/SDXC ^{*3}	SD/SDHC/SDXC ^{*4}
4K Video Recording		Yes	—	—
AVCHD Progressive Recording		Yes (HD)	Yes	—
HD High-Speed Recording for Slow Motion Playback		Yes	—	—
Series Recording between Two SD Cards		Yes	—	—
Dual Recording on Two SD Cards		Yes (HD)	—	—
Image Sensor		1/2.3" 18.9Megapixel Back-illuminated CMOS	1/5.8" 2.5Megapixel Back-illuminated CMOS	1/5.8" 2.5Megapixel Back-illuminated CMOS
Image Processing Engine		FALCONBRID 4K	FALCONBRID	FALCONBRID
Lens		JVC 4K GT LENS	KONICA MINOLTA HD LENS	KONICA MINOLTA HD LENS
Zoom Ratios (Optical / Dynamic ^{*5} / Digital)		10x / 18x (HD) / 200x	40x / 60x / 200x	40x / 60x / 200x
Zoom Position Memory / Zoom Microphone		— / Yes	Yes / Yes	Yes / Yes
Power Off Zoom Memory		Yes	—	—
Enhanced Advanced Image Stabilizer		Yes (HD)	Yes	Yes
Still Image Size (max.)		3840 x 2160	3680 x 2760	3680 x 2760
Compatible with Portable Battery and USB Charging		Yes ^{*6}	Yes ^{*7}	Yes ^{*7}
Wi-Fi Functions		With optional adapter	—	—
3.0" Touch Panel LCD		460k-dot, Wide viewing angle	230k-dot	230k-dot
K2 Technology		Yes	Yes	Yes
Auto Illumi. Light		—	Yes	—
Time-Lapse REC		Yes, 4K compatible	Yes	Yes
Y-Shaped Grip Belt		Yes	Yes	Yes
Filter Thread		46mm	37mm	37mm
Photo-Insert Recording		—	Yes	Yes
Works with iMovie and Final Cut Pro X		Yes	Yes	Yes
Provided PC Software		CyberLink PowerDirector 14 [Via download]	Everio MediaBrowser 4	Everio MediaBrowser 4
Connectors		HDMI mini, USB Standard A, USB Type-C, Mic input	HDMI mini, USB Micro, AV Output	HDMI mini, USB Micro, AV Output
Dimensions (WxHxD) ^{*8}		79mm x 76mm x 162mm (3-1/8" x 3" x 6-7/16")	60mm x 59.5mm x 128mm (2-3/8" x 2-3/8" x 5-1/16")	60mm x 59.5mm x 128mm (2-3/8" x 2-3/8" x 5-1/16")
Weight ^{*9}		620g (1.4lbs)	301g (0.67lbs)	301g (0.67lbs)
Provided Accessories		AC Adapter, Power Cable, HDMI Cable (HDMI mini - HDMI), Lens Cap	AC Adapter, Adapter Cable (DC - USB Micro), AV Cable, USB Cable, Lens Cap	AC Adapter, Adapter Cable (DC - USB Micro), AV Cable, USB Cable, Lens Cap

^{*1} Figures are the approximate time of continuous recording of the default setting mode if the internal battery has been fully charged, when the LED light (if available) is off, the monitor backlight is set to standard mode, and without the use of zoom function. ^{*2} For 4K or High-Speed recording, SDHC/SDXC card with Class 10 or higher performance is required. For HD recording, SDHC/SDXC card with Class 4 or higher performance is required. ^{*3} To record video, SDHC/SDXC card with Class 4 or higher performance is required. For 60P/UXP mode, please use Class 6 or higher. ^{*4} To record video, SDHC/SDXC card with Class 4 or higher performance is required. For UXP mode, please use Class 6 or higher. ^{*5} When image stabilization set to OFF ^{*6} When used with a portable battery that comes with a USB Type-C terminal or a cable with a USB Type-C plug on the end, of over 3A, 5V. 10000mAh or more is recommended. Compatibility is not guaranteed for all portable batteries. ^{*7} When used with a portable battery of over 1.0A, 5V and over 5200mAh. Compatibility is not guaranteed for all portable batteries. ^{*8} Including protrusions, without grip belt ^{*9} Including grip belt

Video Recording Times

[4K Model]

Mode		3,840 x 2,160 QuickTime (.MOV)	1,920 x 1,080 AVCHD (.MTS)		
		4K 30p/25p (70Mbps)	HD 60p/50p (28Mbps)	HD 60i/50i (24Mbps)	HD 60i/50i (18Mbps)
SDHC/SDXC Card	32GB	53min.	2hr. 15min.	2hr. 37min.	3hr. 30min.
	64GB	1hr. 45min.	4hr. 30min.	5hr. 15min.	7hr.
	128GB	3hr. 30min.	9hr.	10hr. 30min.	14hr.
	512GB	14hr.	36hr. 10min.	42hr. 10min.	56hr. 10min.

[HD Models]

Mode		1,920 x 1,080 AVCHD (.MTS)			
		60p (28Mbps)	UXP (24Mbps)	XP (17Mbps)	EP (5Mbps)
Internal Memory	4GB	—	15min.	20min.	1hr. 20min.
	32GB	2h. 20min.	2h. 40min.	3h. 40min.	14hr.
SDHC/SDXC Card	32GB	2hr. 30min.	2hr. 40min.	3hr. 50min.	14hr.
	64GB	5hr.	5hr. 40min.	8hr. 10min.	28hr. 50min.
	128GB	10hr. 10min.	11hr. 30min.	16hr. 20min.	57hr. 50min.

Note: Figures are approximate and may vary depending on scenes to be recorded.

Precautions for Quad Proof Function

- Malfunction due to misuse by the customer is not covered by warranty.
- Before use in water, be sure to read the "Detailed User Guide".
- Close the connector cover firmly until it clicks and confirm that the red sign completely goes off.
- Make sure that there is no damage to and no foreign material adhered to the packing inside the cover.
- Use the camcorder in marine water and fresh water not deeper than 5m/16.4ft and for not more than 1 hour.
- The waterproof cannot be guaranteed if the camcorder is subject to impact such as dropping.
- Do not apply impact in water.
- Do not soak the camcorder in hot springs or water of 40°C/104°F or higher.
- Dustproof function is not meant to encourage use on sand. Avoid use in conditions where sand and/or dust particles can become lodged in moving parts such as the LCD monitor hinge and zoom lever.
- Temperatures between 0°C/32°F and -10°C/14°F temporarily lower battery performance, reducing the time available for recording.
- Quad Proof is not a guarantee of protection against damage and malfunction.

Software System Requirements

[4K Model] CyberLink PowerDirector 14 (Provided as download)

OS: Windows® 10 (32-bit/64-bit edition)
Windows® 8.1 (32-bit/64-bit edition)
Windows® 7 (32-bit/64-bit edition)
(64-bit recommended)

CPU: Intel® Core™ i5 or higher

RAM: 3GB or more (32-bit), 6GB or more (64-bit)

Display: For playback in 4K resolution,
4K-compatible monitor is required.

Graphic: VRAM 1GB or more
For playback in 4K resolution, 4K-compatible
video card is required.

[HD Model] Everio MediaBrowser™ 4 (Provided in the built-in memory of the camera)

OS: Windows® 10 Home / Windows® 10 Pro (64-bit edition,
pre-installed)
Windows® 8.1 / Windows® 8.1 Pro (64-bit edition, pre-installed)
Windows® 7 Home Premium (32-bit edition/64-bit edition,
pre-installed, SP1)

CPU: Intel® Core™ Duo, at least 1.66GHz

RAM: 2GB or more

Display: 1024x768 pixel or more (1280x1024 or more recommended)

Graphic: Intel® G965 or higher

For further details, see the Detailed User Guide

Design and specifications subject to change without notice. The photos of the products featured on this catalog may not be of actual products that are available in your country.

It should be noted that it may be unlawful to re-record pre-recorded tapes, records, or discs without the consent of the owner of copyright in the sound or video recording, broadcast or cable program and in any literary, dramatic, musical, or artistic work embodied therein.

Microsoft® and Windows® are either registered trademarks or trademarks of Microsoft Corporation in the United States and/or other countries. Final Cut Pro, iMovie, QuickTime, Mac, and the Mac logo are trademarks of Apple Inc., registered in the U.S. and other countries. The "Works with iMovie and Final Cut Pro X" logo is a trademark of Apple Inc. "AVCHD", the "AVCHD" logo, "AVCHD Progressive" and the "AVCHD Progressive" logo are trademarks of Panasonic Corporation and Sony Corporation. Dolby, Dolby Audio, and the double-D symbol are trademarks of Dolby Laboratories. The terms HDMI and HDMI High-Definition Multimedia Interface, and the HDMI Logo are trademarks or registered trademarks of HDMI Licensing Administrator, Inc. in the United States and other countries. Intel and Intel Core are trademarks of Intel Corporation or its subsidiaries in the U.S. and/or other countries. SDXC Logo is a trademark of SD-3C LLC. QR Code is registered trademark of DENSO WAVE INCORPORATED. All brand names are trademarks, registered trademarks, or trade names of their respective holders. Screen images and print samples on this catalog are simulated unless otherwise specified.

Copyright© 2018, JVC KENWOOD Corporation

JVC

AVAILABLE AT

Mobile User Guide

Now you can check the instructions on the spot with your smartphone!



<http://manual3.jvckenwood.com/mobile/en/>

Visit Everio Website

Let's learn more about Quad-Proof Everio on your smartphone/tablet!



www.jvc.net/everio-4/